

GetSome



The GetSome is my entry into the world of SSC, Slow Survivable Combat. However, this plan, with the rudder, is an excellent sport plane. It will even flat spin!

This plane is no floater. It doesn't do bad, but because of the thin wing and the higher wing loading, be ready for some short dead stick landing. My All Up Weight for this plane came out right at 2.5 pounds with micro servos, 8 channel receiver, 4oz fuel tank and a MAG15 for plenty of power.

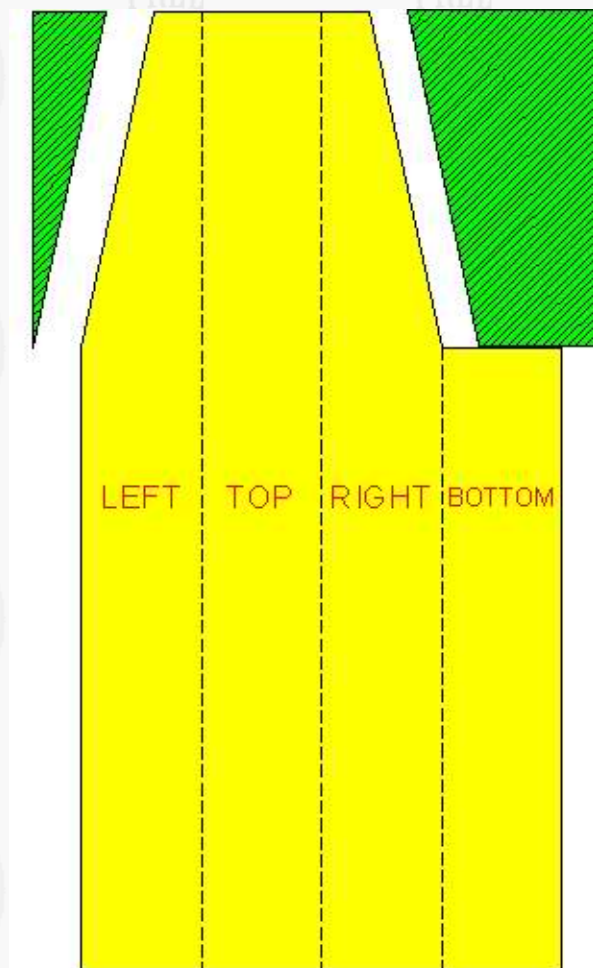
Fuse

Wing

Tail Feathers



The Get Some fuselage was built out of 4mm Coro. See the build tutorial [here](#). I

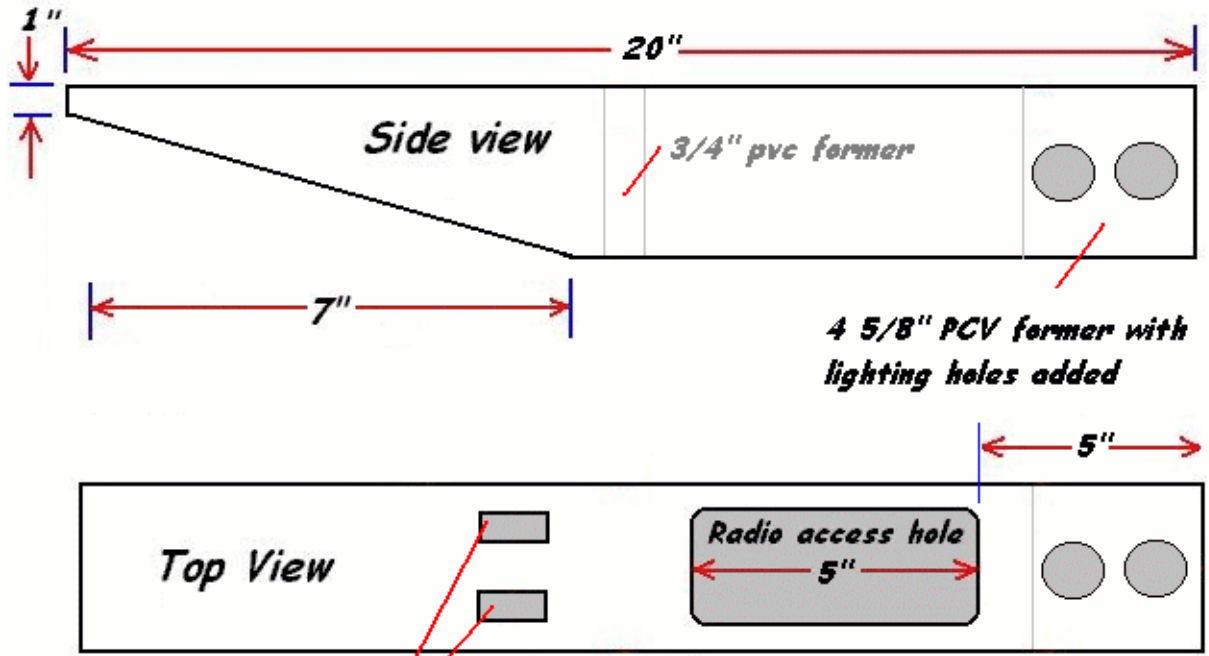


I would change the Coro fuse so that the seam ends up on the bottom or the side of the fuse verse the top. Putting the seam on the top made it difficult to get the wing and the tail feathers to line up and I had to shim the horizontal stabilizer to get it to line up properly.

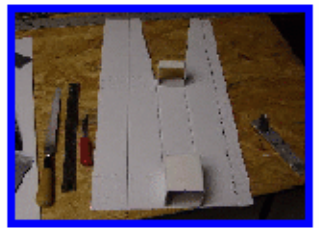
How I find where the fold lines will go depend entirely on the type of gutter pipe that I will be using. I take a piece of scrap 4mm Coro about 3 inches in width and at least 12 inches in length. I lay one of the formers on the Coro to determine which flute is the fold line. I then take my aileron tool and cut the flute out. I fold the Coro up the side and repeat until I have all four sides done. This becomes my template.

I then lay the template so that I can use it to line up the flutes (count the flutes) with the fuse blank and the template. Keep the template because you can use it for all of your Coro fuses.

GetSome Fuselage



1. Use 4 mm Core and PVC Pipe formers
3. There is NO down or right thrust
4. Use your preferences for firewall material
5. Leave 3/8" lip on sides of radio hole
6. Use your servo for elevator servo hole outline



* The PVC Formers are made from American Gutter Pipe but Canadian will work just fine too.
 ** I don't use wing dowels, I use Wire Wing Hold Downs. See [here](#) for more info.

Wing

Up

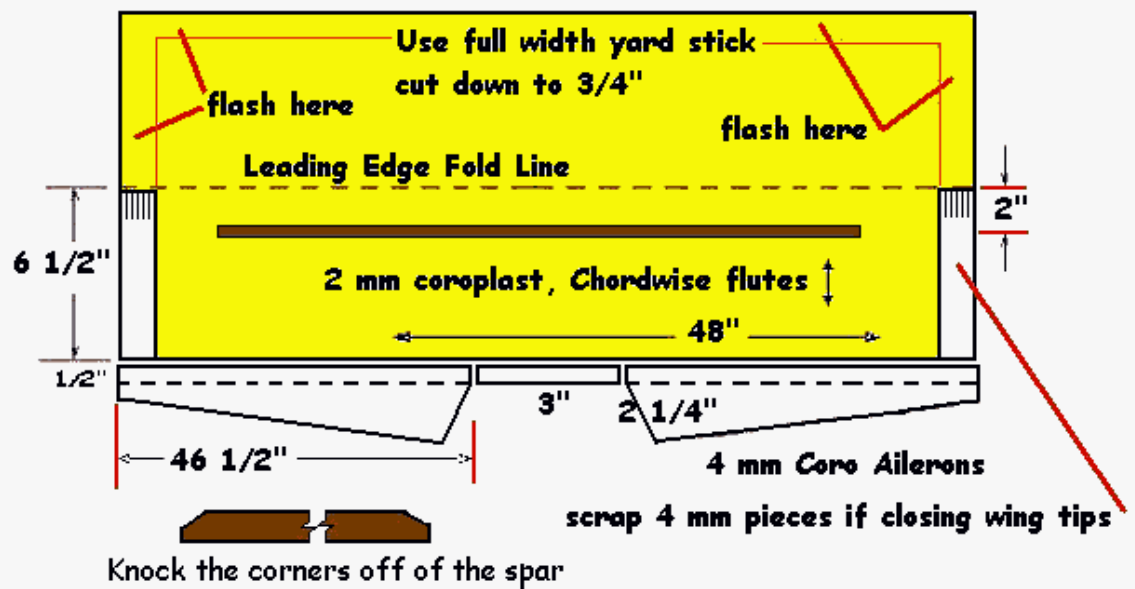
Fuse

Wing

Tail Feathers

The GetSome wing build is very simple and just like every other 2mm wing that you've built up to this point with a couple of minor exceptions. Notice that the spar does not go all way to the tips. This is a two fold reason why. The first is it reduces weight and the second is I sealed the wing tips. Also the spar is only 3/4 inch high. This will yield a wing that is 1 inch thick.

GetSome Wing Construction



Coroplast areas to be glued must be "FLASHED" first!!! Practice this on scrap Coroplast first! Pass a medium flame from a butane or propane torch directly over the plastic slow enough to burn the manufacturing oils out of the plastic, but fast enough not to burn the plastic! It only takes SECONDS and there is very little evidence you have done anything. You may see a slight vapor wave on the plastic in front of the flame and the plastic may turn a darker color and warp slightly...it will return to normal in several seconds. If the plastic ripples or turns shiny...you are nanoseconds away from melting it!!! When gluing plastic to plastic...USE ONLY ONE DROP OF MEDIUM CA EVERY 1/4" TO 1/2" OR SO!!! USING TOO MUCH GLUE IS THE BIGGEST MISTAKE HERE! A bead of glue is too much and may not set up. Also, it is imperative that the parts DO NOT MOVE AT ALL after initial contact. Very helpful hint: If you live in a dry climate, or have trouble getting the CA to work, a slight mist of water from a spray bottle, on the opposing surface to be glued, can be used to help the CA activate

Layout the wing as shown starting with a 48"x13 1/2" piece of 2 mm Coroplast with the flutes running in the chordwise direction. Build the spar from one yard stick cut down to 3/4" in height. Glue the spar in place. Score the LE and pre-fold the top panel and trim the TE flush. Go for a flat bottom, semi-symmetrical airfoil. Cut out the ailerons, center piece and side pieces (if closing the wing tips) from 4 mm coroplast. Hinge the ailerons by cutting away the bottom of the hinge line flute. Glue the ailerons, center piece and side pieces to the bottom wing panel. Be sure that the aileron hinge clears the TE.

Fold and glue the wing top panel to the spar and the ailerons. After the glue is dry, glue the sides of the top panel to the bottom panel side spacers. Finish the wing by cutting and gluing a 4" wide by 2mm center wrap to the upper panel center. Insert some scrap pushrods or coat hangers into the LE and TE flutes of the center wrap for rubber band crush protection.

Up

Fuse

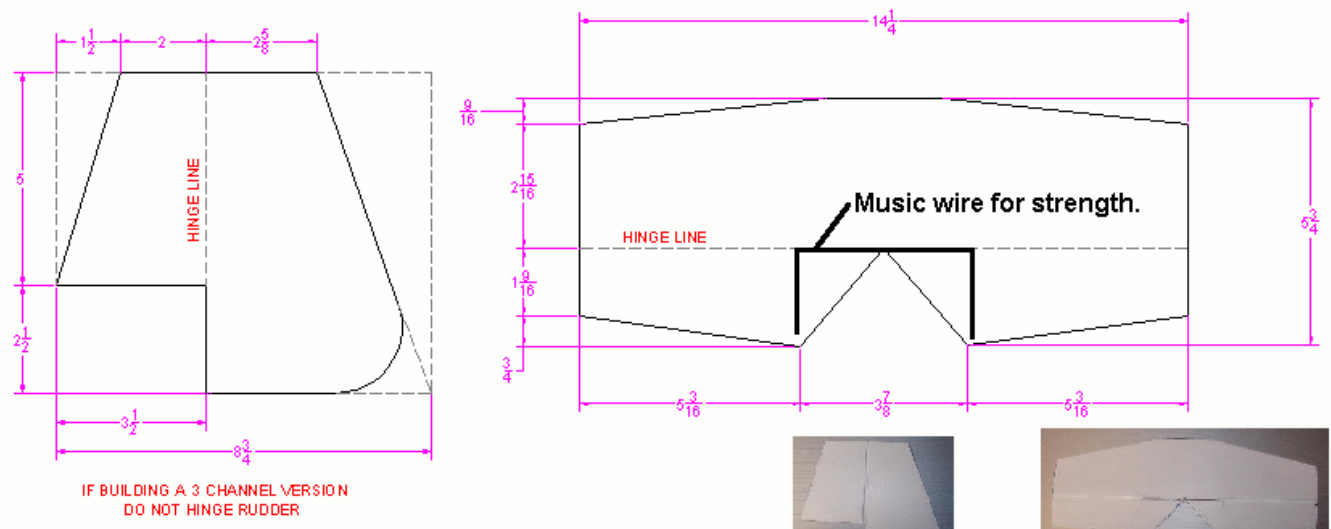
Wing

Tail Feathers

Tail Feathers

- Up
- Fuse
- Wing
- Tail Feathers**

The tail feathers were borrowed from the Spazzler scaled 78%. I love these tail feathers so much, it just seemed fitting to add them to the GetSome.



TAIL FEATHERS FROM SPAZZLER. SCALED 78%

Because the rudder goes through the Horizontal Stabilizer, you must add a piece of music wire so that the two elevator halves will operate properly.

- Up
- Fuse
- Wing
- Tail Feathers**